

Notice of Defaults
 By Community
 1st Qtr 2000 - 4th Qtr 2011
 See Notes Below



Year	Qtr	Recording District										Total
		Anchorage	Bethel	Fairbanks	Juneau	Kenai	Ketchikan	Kodiak	Palmer	Sitka	Rest of State	
2000	Q1	121	1	49	5	54	6	5	63	2	68	374
	Q2	110	3	71	11	26	12	1	89	1	45	369
	Q3	144	0	53	10	76	9	11	71	0	23	397
	Q4	124	0	57	5	33	6	4	84	2	29	344
2000 Total		499	4	230	31	189	33	21	307	5	165	1,484
2001	Q1	124	3	56	10	42	10	13	70	2	42	372
	Q2	131	0	43	16	35	15	3	93	4	59	399
	Q3	127	3	50	10	35	10	8	67	4	43	357
	Q4	125	3	39	14	23	14	7	76	5	71	377
2001 Total		507	9	188	50	135	49	31	306	15	215	1,505
2002	Q1	103	0	56	16	33	20	0	76	2	46	352
	Q2	105	2	40	16	51	15	6	120	0	24	379
	Q3	123	1	66	10	18	15	0	54	0	56	343
	Q4	163	3	37	15	34	72	7	69	10	22	432
2002 Total		494	6	199	57	136	122	13	319	12	148	1,506
2003	Q1	100	1	44	6	36	28	2	76	6	41	340
	Q2	93	0	34	5	37	19	1	91	2	45	327
	Q3	97	1	43	10	28	21	1	71	1	37	310
	Q4	94	2	84	14	45	2	1	56	2	40	340
2003 Total		384	4	205	35	146	70	5	294	11	163	1,317
2004	Q1	107	7	44	22	59	7	4	86	1	102	439
	Q2	89	2	63	11	29	13	3	71	2	91	374
	Q3	112	1	41	1	19	9	2	84	0	69	338
	Q4	127	0	51	7	31	10	8	53	1	36	324
2004 Total		435	10	199	41	138	39	17	294	4	298	1,475
2005	Q1	111	4	38	8	33	6	2	66	0	48	316
	Q2	149	0	61	8	41	8	4	79	1	116	467
	Q3	117	0	38	11	22	16	2	68	0	41	315
	Q4	130	1	41	3	25	11	4	70	3	72	360
2005 Total		507	5	178	30	121	41	12	283	4	277	1,458
2006	Q1	137	1	57	14	35	7	5	93	5	23	377
	Q2	159	1	64	8	27	4	6	144	2	68	483
	Q3	141	3	66	10	33	21	5	114	3	43	439
	Q4	219	1	56	14	24	6	7	130	0	49	506
2006 Total		656	6	243	46	119	38	23	481	10	183	1,805
2007	Q1	189	1	47	20	29	11	8	97	2	55	459
	Q2	236	2	93	20	41	9	153	107	1	77	739
	Q3	239	1	55	15	30	11	6	194	1	26	578
	Q4	237	0	50	18	17	9	10	98	1	29	469
2007 Total		901	4	245	73	117	40	177	496	5	187	2,245
2008	Q1	288	7	63	15	41	6	1	150	3	48	622
	Q2	348	0	90	17	26	8	2	167	5	44	707
	Q3	240	2	112	9	23	27	4	163	5	52	637
	Q4	320	4	97	17	27	15	2	130	4	35	651
2008 Total		1,196	13	362	58	117	56	9	610	17	179	2,617
2009	Q1	256	2	99	14	30	14	2	112	4	54	587
	Q2	364	6	85	32	62	14	4	166	8	559	1,300
	Q3	299	4	110	47	38	10	3	175	5	63	754
	Q4	364	4	72	33	63	8	2	197	4	66	813
2009 Total		1,283	16	366	126	193	46	11	650	21	742	3,454
2010	Q1	354	5	100	32	43	18	1	152	6	38	749
	Q2	254	2	145	22	59	15	2	120	0	63	682
	Q3	372	4	101	11	31	19	5	207	12	51	813
	Q4	233	2	71	17	35	16	7	138	1	36	556
2010 Total		1,213	13	417	82	168	68	15	617	19	188	2,800
2011	Q1	237	2	93	10	35	17	4	109	0	41	548
	Q2	0	0	0	0	0	0	0	0	0	0	0
	Q3	0	0	0	0	0	0	0	0	0	0	0
	Q4	0	0	0	0	0	0	0	0	0	0	0
2011 Total		237	2	93	10	35	17	4	109	0	41	548
Grand Total		8,312	92	2,925	639	1,614	619	338	4,766	123	2,786	22,214

Notes:

Filings refer to a legal property description and may contain multiple units of housing
 Filings do not distinguish between commercial structures, residential structures and land.

Notice of Foreclosure Action (Trustee Deeds)

By Community

1st Qtr 2000 - 1st Qtr 2011

See Notes Below



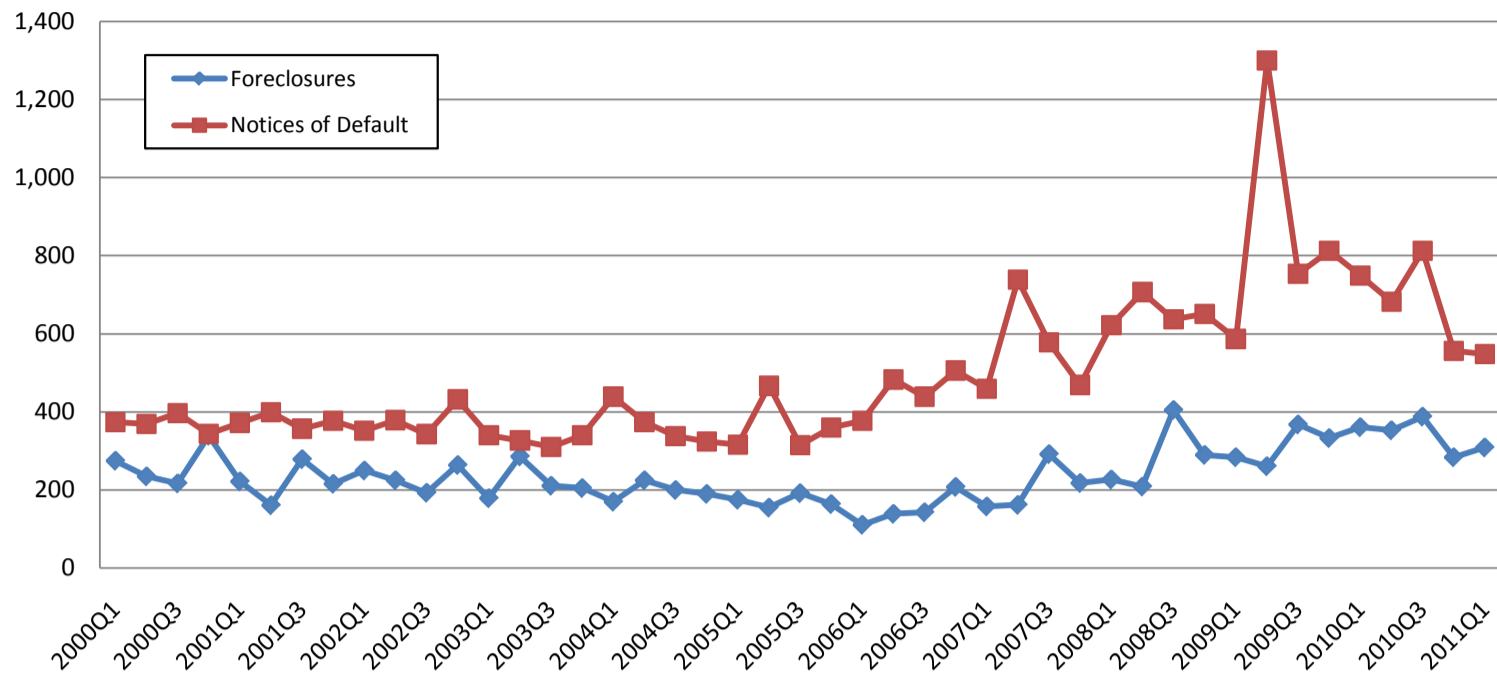
Year	Qtr	Recording District										Total
		Anchorage	Bethel	Fairbanks	Juneau	Kenai	Ketchikan	Kodiak	Palmer	Sitka	Rest of State	
2000	Q1	99	0	23	3	44	4	2	82	0	18	275
	Q2	59	0	33	4	32	5	1	66	3	32	235
	Q3	49	1	38	3	28	5	2	59	2	30	217
	Q4	77	2	28	7	25	7	2	82	0	109	339
2000 Total		284	3	122	17	129	21	7	289	5	189	1,066
2001	Q1	53	1	46	0	17	4	1	78	1	21	222
	Q2	34	0	30	4	28	1	2	38	1	23	161
	Q3	43	0	37	7	38	15	6	61	0	72	279
	Q4	59	0	28	6	24	9	5	42	3	40	216
2001 Total		189	1	141	17	107	29	14	219	5	156	878
2002	Q1	48	2	46	7	27	14	13	75	2	16	250
	Q2	50	0	30	8	19	6	1	77	0	34	225
	Q3	46	0	39	6	24	10	3	42	0	23	193
	Q4	48	0	11	5	31	61	0	67	0	41	264
2002 Total		192	2	126	26	101	91	17	261	2	114	932
2003	Q1	42	1	21	4	29	9	2	37	1	33	179
	Q2	72	0	21	5	25	75	5	57	0	26	286
	Q3	29	0	30	5	24	16	1	58	0	48	211
	Q4	28	0	26	1	31	12	1	62	1	43	205
2003 Total		171	1	98	15	109	112	9	214	2	150	881
2004	Q1	33	1	28	4	31	9	3	22	6	33	170
	Q2	23	1	19	2	20	13	3	80	1	63	225
	Q3	32	2	43	2	21	8	0	51	0	41	200
	Q4	26	0	29	1	55	6	0	24	0	49	190
2004 Total		114	4	119	9	127	36	6	177	7	186	785
2005	Q1	39	1	31	2	19	13	4	31	1	34	175
	Q2	20	2	18	1	16	5	2	71	2	18	155
	Q3	28	0	38	1	21	4	2	55	1	42	192
	Q4	28	0	27	2	39	6	0	27	0	35	164
2005 Total		115	3	114	6	95	28	8	184	4	129	686
2006	Q1	37	2	9	1	9	5	0	26	2	20	111
	Q2	33	0	21	1	34	3	3	32	1	11	139
	Q3	50	1	25	0	24	1	3	23	0	16	143
	Q4	42	0	25	5	21	3	1	80	2	29	208
2006 Total		162	3	80	7	88	12	7	161	5	76	601
2007	Q1	51	0	19	8	14	0	3	42	0	21	158
	Q2	61	1	18	3	18	7	1	30	0	23	162
	Q3	103	0	62	11	16	9	5	54	0	32	292
	Q4	91	0	25	2	24	2	1	61	0	12	218
2007 Total		306	1	124	24	72	18	10	187	0	88	830
2008	Q1	113	0	25	3	8	2	3	66	1	6	227
	Q2	74	3	26	3	16	2	3	52	0	30	209
	Q3	138	1	36	7	10	2	0	95	1	115	405
	Q4	133	0	46	12	16	7	3	62	0	11	290
2008 Total		458	4	133	25	50	13	9	275	2	162	1,131
2009	Q1	88	3	65	9	16	10	0	69	4	20	284
	Q2	101	0	46	14	15	4	0	53	1	27	261
	Q3	133	3	64	10	16	7	0	86	1	48	368
	Q4	110	3	54	15	33	3	0	69	3	43	333
2009 Total		432	9	229	48	80	24	0	277	9	138	1,246
2010	Q1	117	1	55	18	27	4	2	104	0	33	361
	Q2	131	4	45	18	25	4	1	88	6	31	353
	Q3	119	1	81	12	40	5	2	92	2	34	388
	Q4	107	1	44	4	13	9	1	80	2	23	284
2010 Total		474	7	225	52	105	22	6	364	10	121	1,386
2011	Q1	120	1	43	12	24	4	6	64	2	33	309
	Q2	0	0	0	0	0	0	0	0	0	0	0
	Q3	0	0	0	0	0	0	0	0	0	0	0
	Q4	0	0	0	0	0	0	0	0	0	0	0
2011 Total		120	1	43	12	24	4	6	64	2	33	309
Grand Total		3,017	39	1,554	258	1,087	410	99	2,672	53	1,542	10,731

Notes:

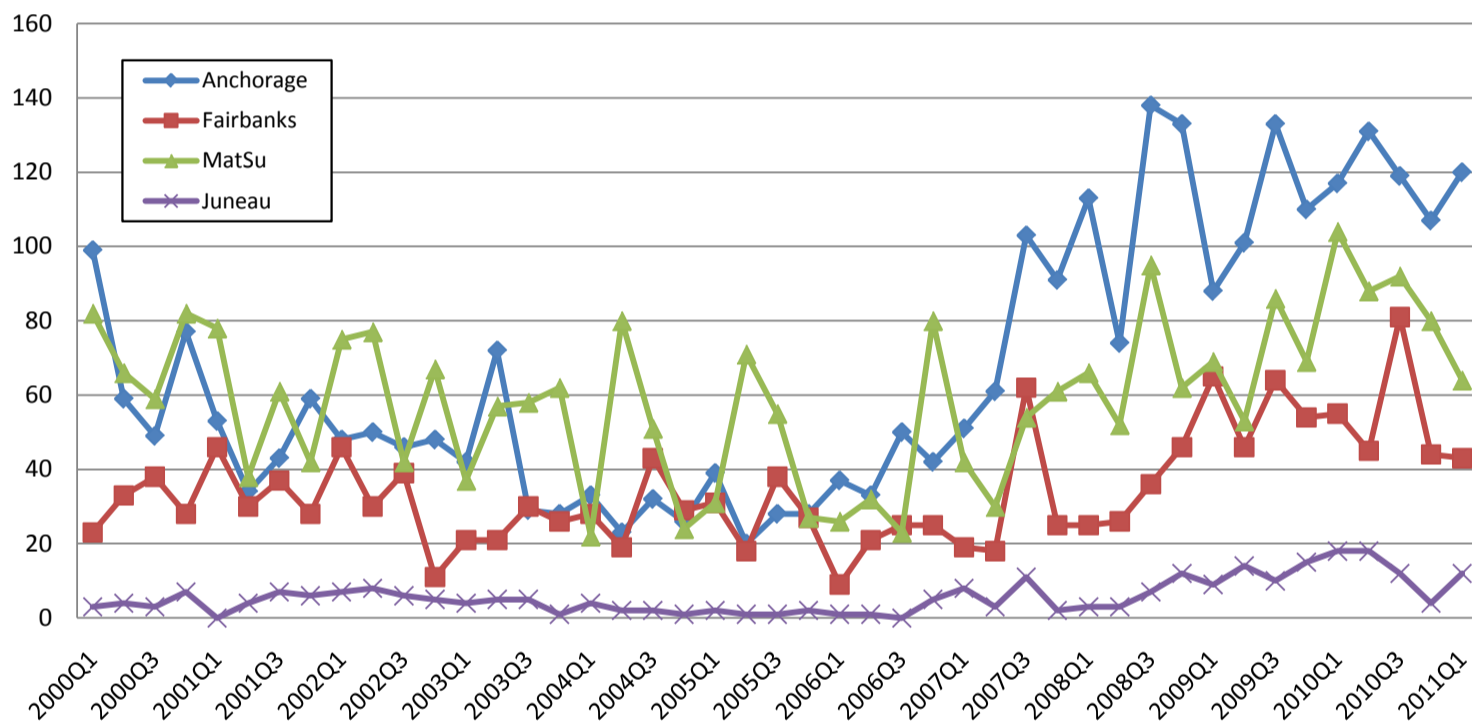
Fillings refer to a legal property description and may contain multiple units of housing

Only includes Trustee Deeds, not Notices of Default. These filings should be considered lagging indicators, as they reference the completion of a foreclosure process, not the actual beginning of a foreclosure activity.

Notices of Default and Foreclosures: 2000 - 2010



Regional Foreclosure Activity: 2000 - 2010



Regional Default Activity: 2000 - 2010

